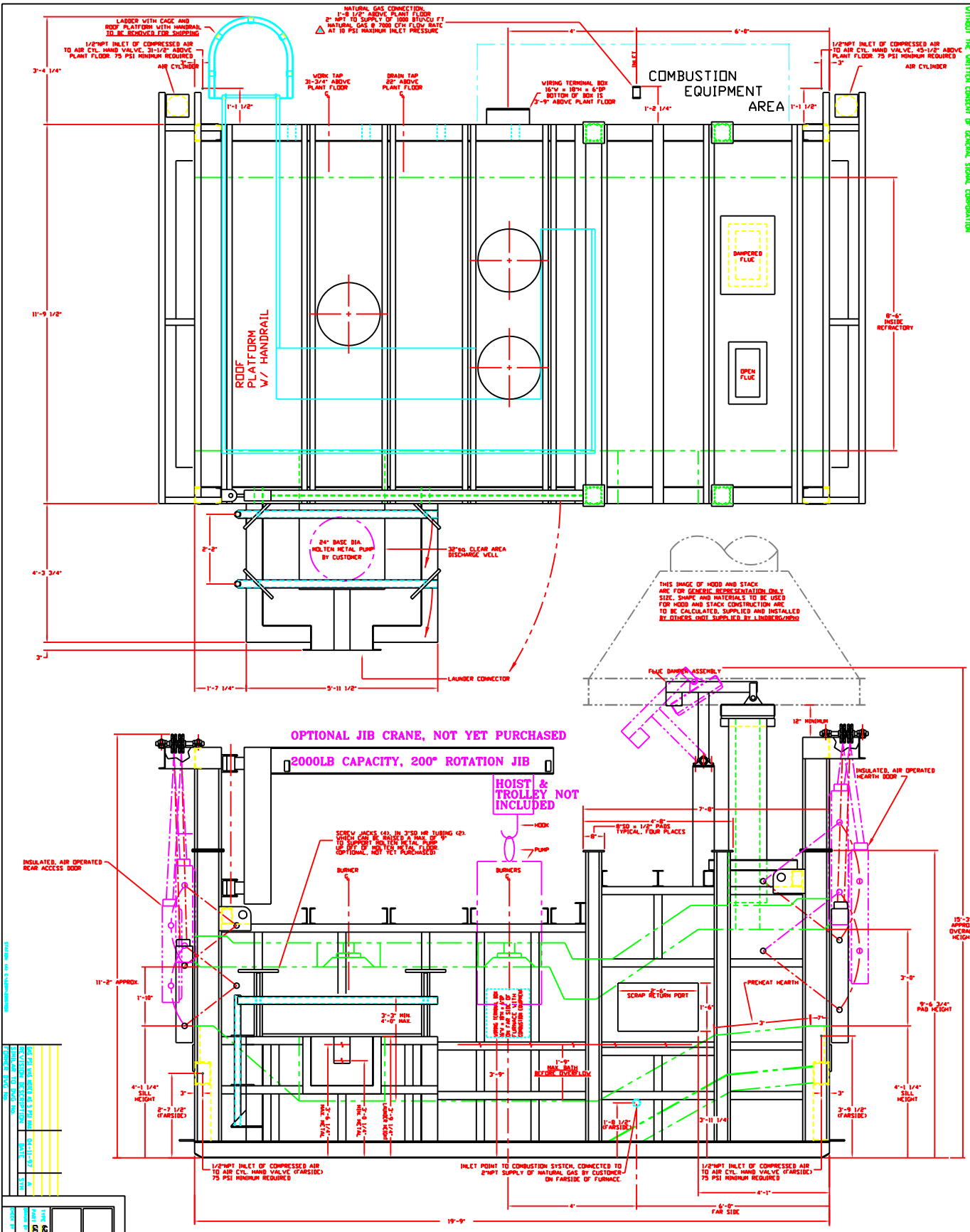


INFORMATION CONTAINED HEREIN IS CONFIDENTIAL, IS THE PROPERTY OF LINDBERG/MPH CORPORATION  
 IS TO BE USED ONLY FOR THE PURPOSE PROVIDED AND IS NOT TO BE DISCLOSED TO OTHERS  
 WITHOUT THE WRITTEN CONSENT OF GENERAL SIGNAL CORPORATION



<b>CS</b> A GENERAL SIGNAL COMPANY <b>LINDBERG/MPH</b>	
6-ARDERON ALUMINUM CENTRAL HEATING FURNACE VENDOR'S & OEM'S BOOK THE GENERAL LAYOUT ARRANGEMENT LATEST REVISION 03-17-97	
MODEL NO. AB DATE 3/4/11	DRAWN BY <b>CHRISTOPHER CANADA</b> 2010-7050

**APPROVED FOR GENERAL ARRANGEMENT**  
 BY \_\_\_\_\_ DATE \_\_\_\_\_  
 CHANGES REC'D. ? YES: \_\_\_\_\_ NO: \_\_\_\_\_

"WEST SIDE" FURNACE: AS SHOWN  
 "EAST SIDE" FURNACE: MIRROR IMAGE

**CAPACITY: 31,240 LB @ 162 LB/CU FT**

ISSUED FOR JOB NUMBER _____ DATE ISSUED TO BUILT _____ R-7891 DWT, CAMBRIDGE (MADE) R-7890 DWT, CHATELAIN (MADE) R-7892 DWT, CANADA (SHOWN)	QTY DATE ISSUED TO BUILT _____ _____
---	--